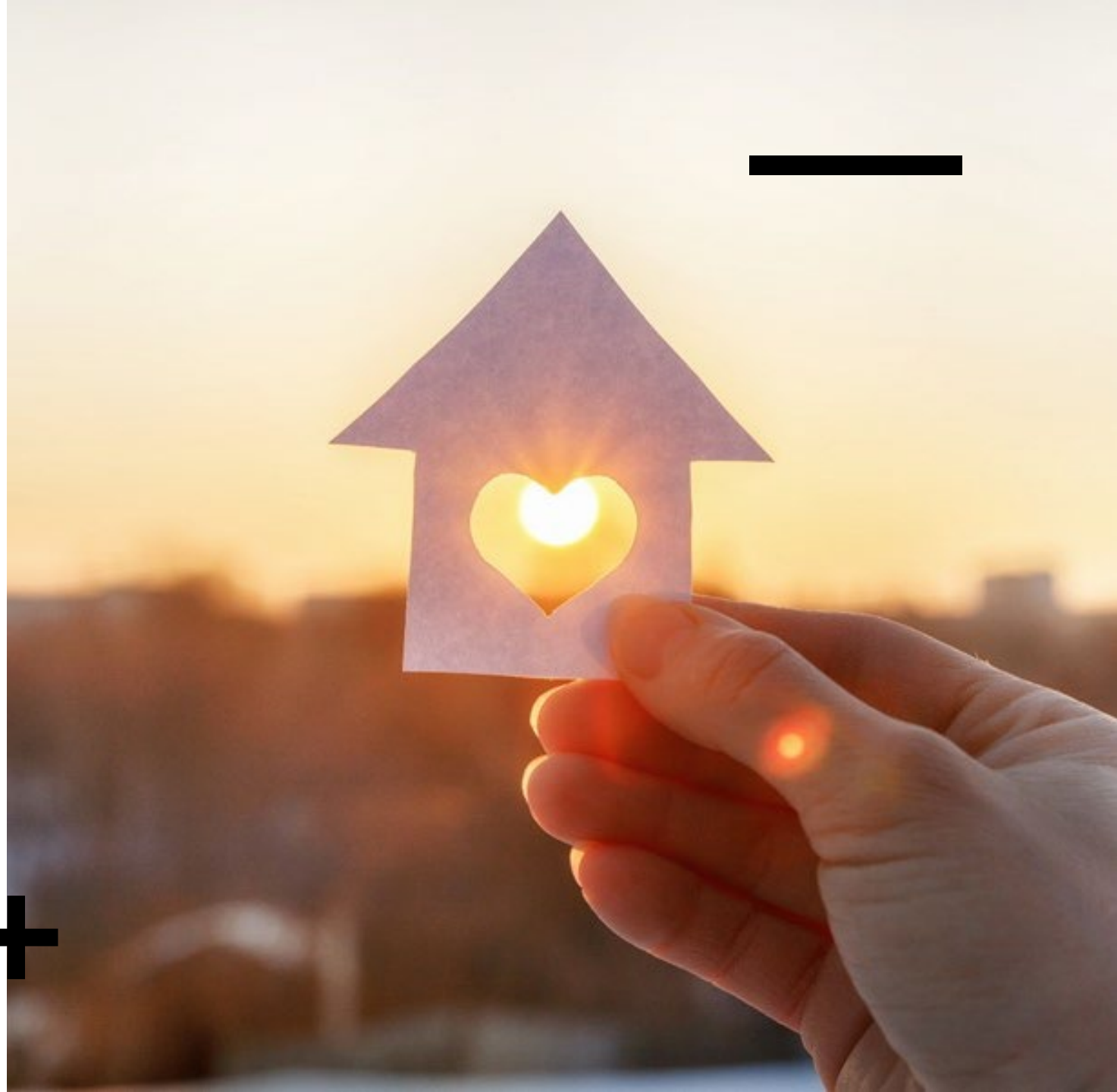


Red Wing Community Planning Session on Homelessness and Housing Instability

Welcome!

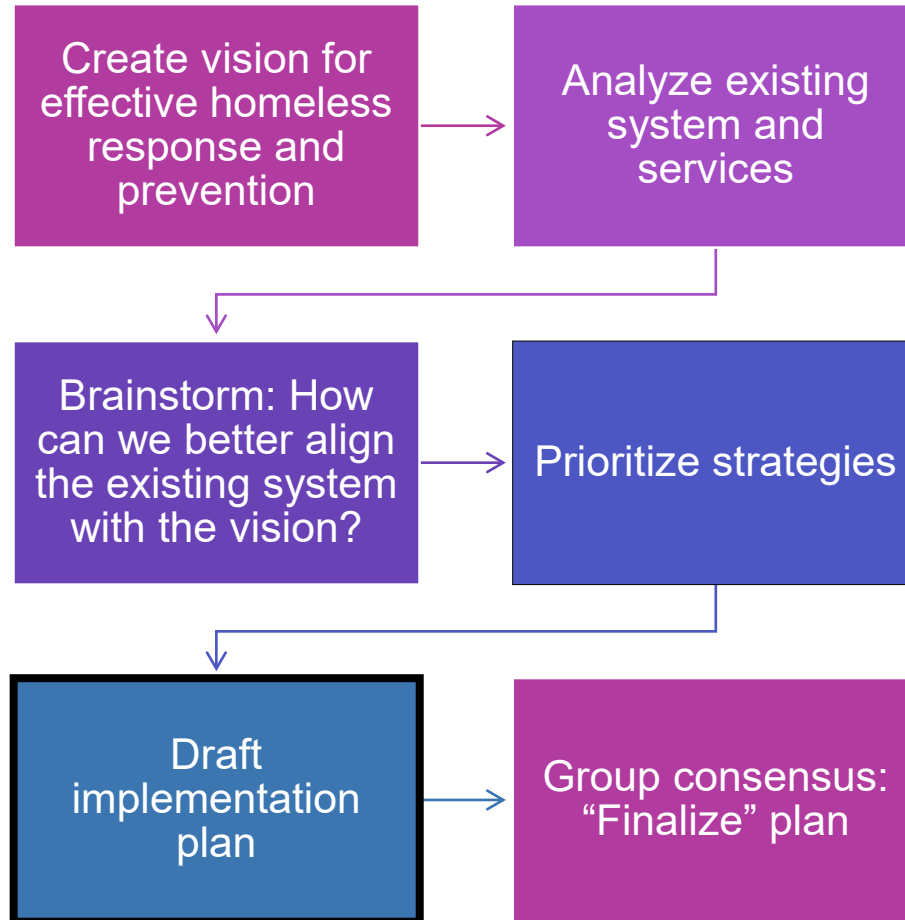


Introduction
s

Name

Organization (if
applicable)





Project timeline



Proposed strategies

Collected from study (best practices and interviews), community discussions and work groups

“Projects”: Actionable items designed to make an impact

Prioritize 2-3 strategies per topic (affordable/supportive housing, emergency shelter, prevention) to have a detailed plan

Remaining strategies will still be included in plan



Prioritized strategies
for initial planning
phase:
Affordable/Supportive
Housing



New supportive and
affordable housing units

Address NIMBY

Landlord partnership and
incentive program



Prioritized strategies
for initial planning
phase: Emergency
shelter

Comprehensive plan

Real-time, by-name list

Host homes for youth



Prioritized strategies
for initial planning
phase: Homeless
prevention

Single point of contact

Increase funding

Tenant/landlord
connection



Implementation planning

Actions

- What are the immediate next steps?
- These have been filled in to get you started, but can be changed

Partners

- Who will lead the project? This could be a single agency or a collaborative
- Who else needs to be involved?

Resources

- Could be funding, systems, programs, community resources, etc.
- Could be existing or potential

Timeline

- What are some major milestones?
- When is this strategy complete/fully implemented?

Report back from small groups



Most promising



Biggest “AHA”



Gap/question for the large group



Next steps

Draft plan will be sent out by email and posted online for comments
Presentation to the City Council and wrap-up event (dates TBD)

