



STURGEON LAKE ROAD Gateway to Prairie Island



WHAT IS THE STURGEON LAKE ROAD/CP RAIL INTERSECTION PROJECT?

The purpose of the Sturgeon Lake Road/Canadian Pacific (CP) Rail Intersection Project is to reduce traffic delays due to rail traffic, enhance emergency response time to and evacuation time from Prairie Island, and improve traffic safety. To achieve this, Sturgeon Lake Road needs to be elevated to overpass the tracks.

The project was first initiated in 2005. In 2006 a design was developed for a Sturgeon Lake Road bridge over CP Rail tracks. The project went on hold in 2007. In 2011 the project was reinitiated due to the availability of Federal project funding. From mid-2011 through April 2012 the Sturgeon Lake Road design has been reviewed and updated with input from the Prairie Island Indian Community, the City of Red Wing, MnDOT, Treasure Island Resort and Casino, Xcel Energy, and the Army Corps of Engineers.

The updated Sturgeon Lake Road design is shown below. The design is similar to the 2006 design, with the following changes; 1) shifts Sturgeon Lake Road north to avoid the new Public Safety Building, 2) accommodates a future commuter rail station 3) Holmquist Road and Other Day Road access to Sturgeon Lake Road from South.

The project is proposed to be paid for using Federal, State and City funds. The primary Tribal contribution to the project will be provision of needed right-of-way.

YOU'RE INVITED...

Please join us for a community information meeting regarding the updated Sturgeon Lake Road/CP Rail intersection project.

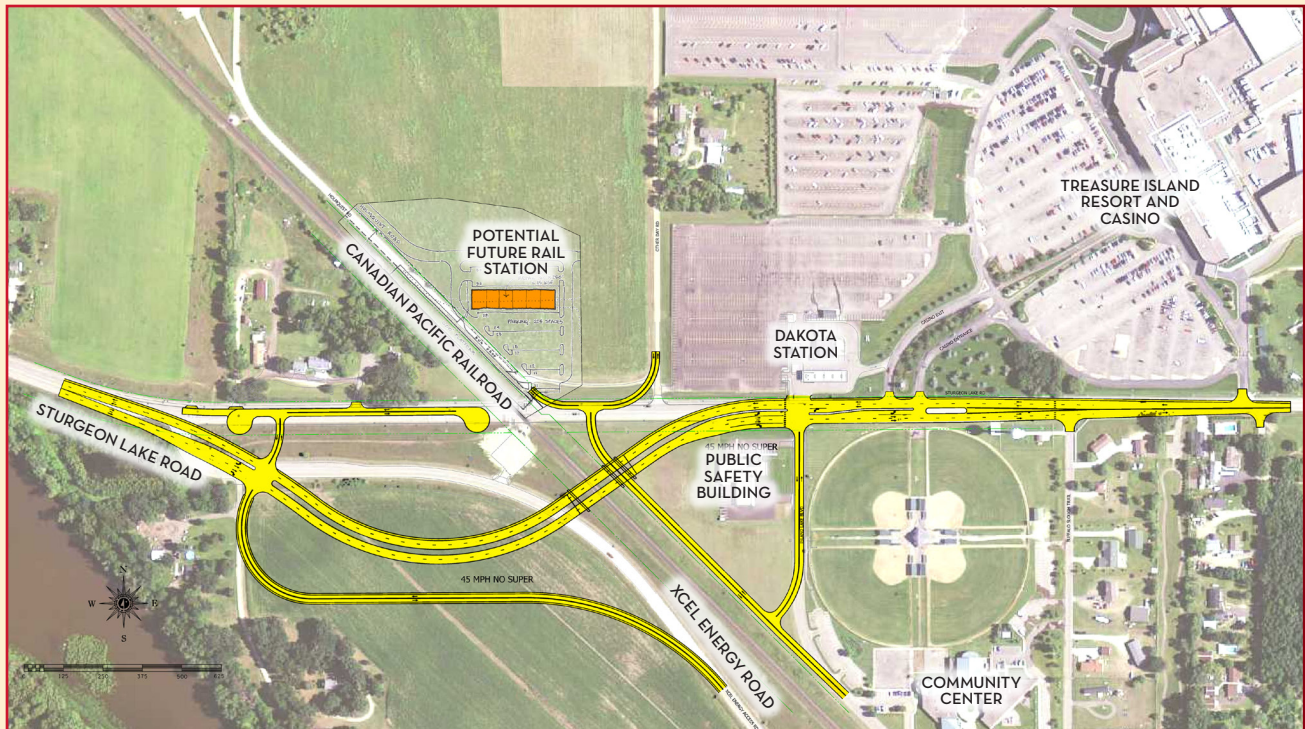
DATE: June 19, 2012

TIME: 4:30 PM to 6:30 PM

Brief presentation at 5:00 PM

LOCATION:

PIIC Community Center
3838 Island Boulevard
Welch, MN 55089



The updated Sturgeon Lake Road design has been developed with input from the project stakeholders. Please join us for a community information meeting on June 19 to learn more.



STURGEON LAKE ROAD Gateway to Prairie Island



WHAT ARE THE NEXT STEPS?

The City, PIIC and MnDOT have updated the 2006 Sturgeon Lake Road/CP Rail intersection design that meets the goals and objectives of the project. After the Community Meeting in June we anticipate the following activities will be completed over the next 12 to 18 months (by the end of 2013).

- Develop Preliminary Layout
- Preliminary Layout Approval by PIIC, City and MnDOT
- Environmental Document Public Review and Comment
- Right-of-Way Negotiation and Acquisition
- Final Plan Approval

Preliminary Layout will show:

- Construction limits
- Right-of-way needs
- Environmental impacts
- Roadway cross section
- Roadway profile grades

FOR MORE INFORMATION

Please contact: Ron Rosenthal,
Engineering Director,
City of Red Wing

ADDRESS:
229 Tyler Road North,
Red Wing, MN 55066

PHONE: (651) 385-3626

E-MAIL:
ron.rosenthal@ci.red-wing.mn.us

OR VISIT:
[http://www.red-wing.org/
sturgeonlakeroad.html](http://www.red-wing.org/sturgeonlakeroad.html)



CITY OF RED WING
229 Tyler Road North
Red Wing, MN

Place
postage
here.

RECIPIENT ADDRESS